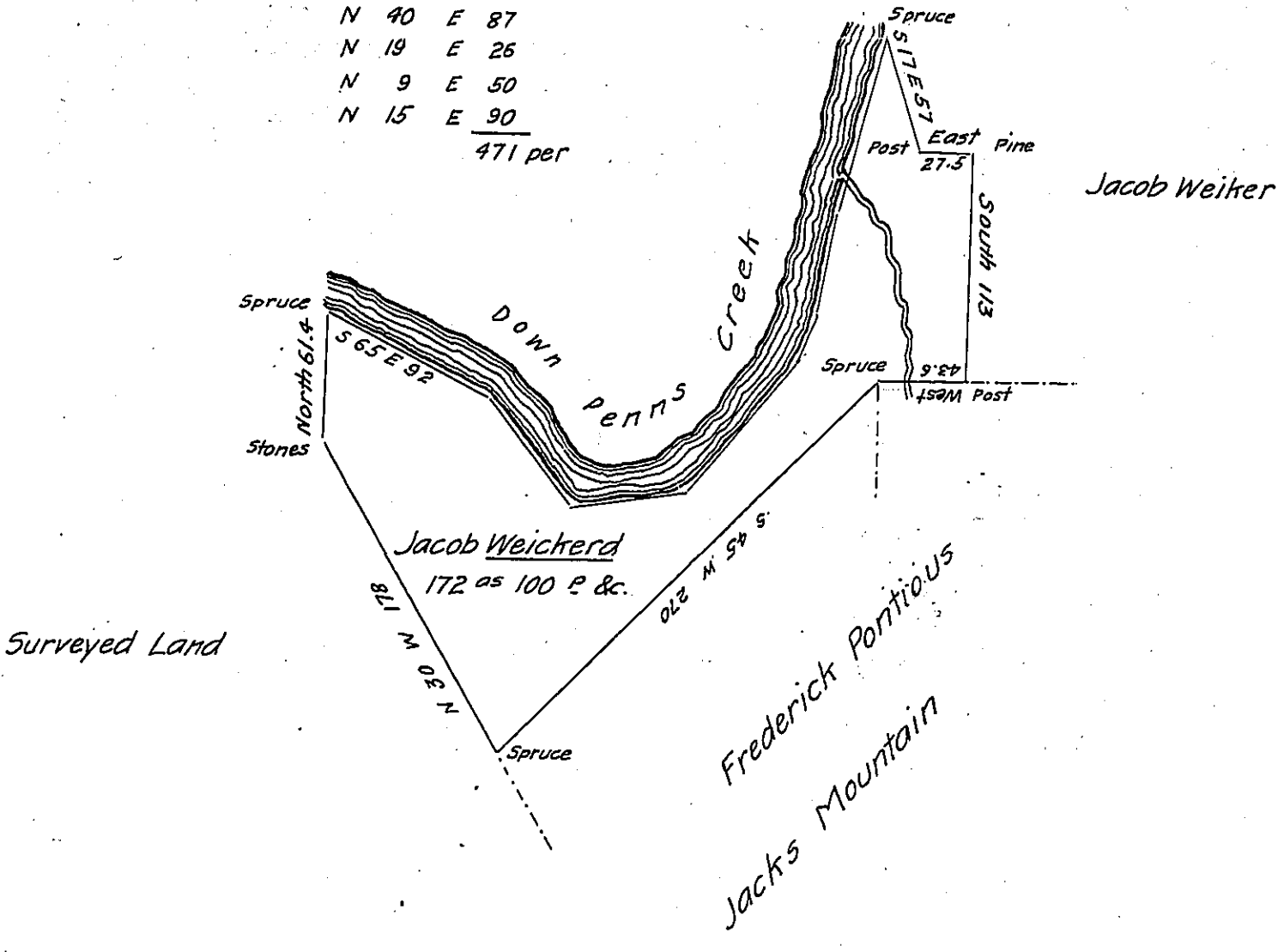


Cor. & Dist. down Creek.

- S 65 E 92
 - S 39 E 68
 - N 83 E 58
 - N 40 E 87
 - N 19 E 26
 - N 9 E 50
 - N 15 E 90
- 471 per



Draft of a tract of land situate in Hartley township Union
 County containing one hundred and seventy two acres and one ^{hundred} perches
 and the usual allowance &c. Surveyed the 1st day of August A.D. 1839
 for Jacob Weiker in pursuance of his warrant dated the 19th day of
 March 1814

Robt G.H. Hayes D.S.

To Jacob Sallade Esqr. }
 Surveyor General Penn.

N.B. There is about two acres of clear land on this survey

Robt G.H. Hayes D.S.

IN TESTIMONY that the above is a copy of the original remaining on file in
 the Department of Internal Affairs of Pennsylvania, made
 conformably to an Act of Assembly approved the 16th day of
 February, 1833, I have hereunto set my Hand and caused
 the Seal of said Department to be affixed at Harrisburg,
 this nineteenth day of December 1904

George B. Brown
 Secretary of Internal Affairs.